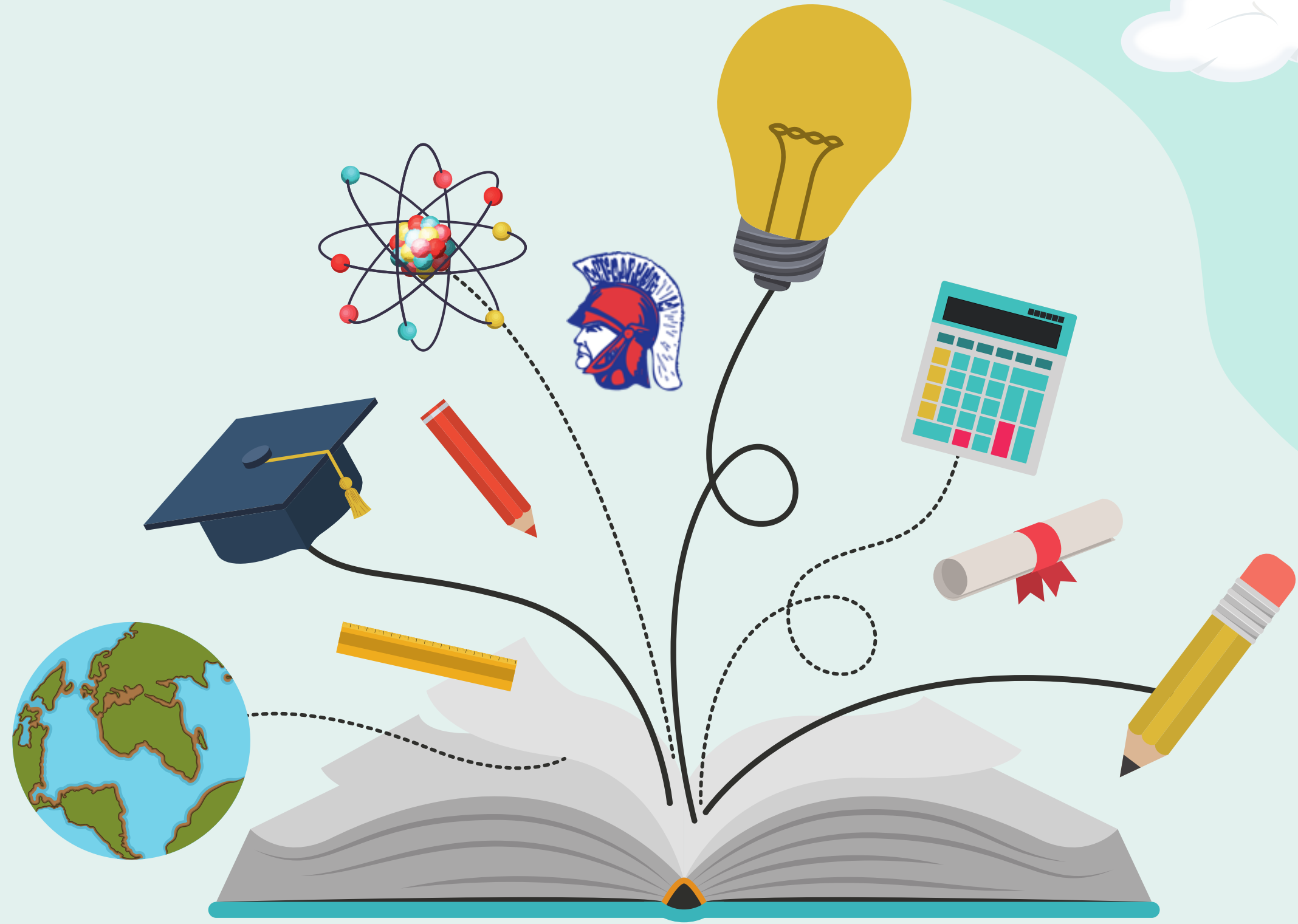
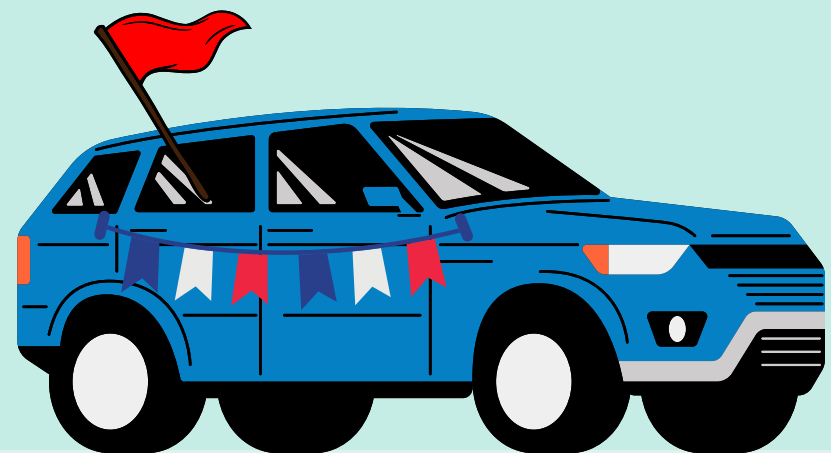


# COLLEGE INFO SESSION





# SHS RESOURCES

- SHS has fantastic resources, so take advantage!
  - Dedicated Teachers & Coaches
  - Great Counselors
  - Dynamic PTO
    - College Essay Tutors
    - College Scholarships

# WCPSS Graduation Requirements Class of 2024 and Beyond

|                      |                   |   |
|----------------------|-------------------|---|
| English              | 4 Credits         | English I, II, III, IV  |
| Math                 | 4 Credits         | NC Math 1, NC Math 2, NC Math 3 (and one course higher than Math 3)   |
| Science              | 3 Credits         | Earth Science, Biology, and Physical Science (or Chemistry or Physics)  |
| Humanities           | 4 Credits         | World History, Civics Literacy, American History, Economics & Personal Finance                                      |
| World Languages      | Not Required      | Not required for graduation. Two years of the same language is required for admission to 4-year public universities |
| Health and PE        | 1 Credit          | Healthful Living or JROTC I & II  |
| Electives            | 10 Credits        | 2 Elective Credits or any combination from either CTE, Arts or World Language                                       |
| <b>Total Credits</b> | <b>26 Credits</b> | <i>*Future Ready (College Prep Track)</i>   |



# WHAT MATTERS MOST

**GPA / CLASS RANK**

**GRADES IN COLLEGE PREP COURSES (AP)**

**GRADES IN ALL COURSES (+Honors)**

**ADMISSION TEST SCORES**

**ESSAYS / SUPPLEMENTAL QUESTIONS**

**STRENGTH OF CURRICULUM**

**EXTRACURRICULAR / LEADERSHIP**

| Grade | Regular | Honors | College |
|-------|---------|--------|---------|
| A     | 4.00    | 4.50   | 5.00    |
| B     | 3.00    | 3.50   | 4.00    |
| C     | 2.00    | 2.50   | 3.00    |
| D     | 1.00    | 1.50   | 2.00    |
| F     | 0.00    | 0.50   | 1.00    |



# Difference Between the SAT & the ACT



| Section                        | SAT   | ACT  |
|--------------------------------|---|--|
| Reading                        | 52 questions, 65 minutes<br>(75 seconds/question) | 40 questions, 35 minutes<br>(53 seconds/question)                                      |
| Writing and Language / English | 44 questions, 35 minutes<br>(48 seconds/question) | 75 questions, 45 minutes<br>(36 seconds/question)                                      |
| Math (Calculator Permitted)    | 38 questions, 55 minutes<br>(87 seconds/question) | 60 questions, 60 minutes<br>(60 seconds/question)                                      |
| Math (No Calculator)           | 20 questions, 25 minutes<br>(75 seconds/question) | —  |
| Science                        | —   | 40 questions, 35 minutes<br>(53 seconds/question)                                      |
| Essay (Optional)               | —   | 1 prompt, 40 minutes   |
| <b>TOTAL</b>                   | 154 questions, 3 hours                            | 215 questions + 1 essay<br>2 hours 55 minutes w/o essay<br>3 hours 35 minutes w/ essay |

SAT / 1600

ACT / 36

The SAT gives an average of 70 seconds per question, compared to the ACT's 49 seconds. Consider whether you need more time to complete one of the sections.

ACT scores are based on what a student gets correct; there's no penalty for a wrong answer. A student can miss 50 questions and still get a 26.

SAT scores are based on what a student gets correct; there's no penalty for a wrong answer. However, the SAT uses scaled scoring. This means that missing one question can sometimes result in a 10-point difference, and other times can result in not gaining 30 points on that section. Sometimes missing one question doesn't have any effect at all, and your overall score will remain at 800.

## SAT

- You're Confident in Your Math abilities.
- You would like more time per question.
- You're Not a Fan of Science.

## ACT

- You're confident in your Reading comprehension abilities.
- You're Less Confident in Your Math abilities.
- Science Is One of Your Strong suits.
- You're a strong writer.

# Submitting Test Scores

 **UNC System schools won't require SAT or ACT for admissions through the fall of 2024.**

- **\*Golden Rule:** Submit High Scores
  - \*ACT 26 - 36
  - \*SAT 1100 - 1600

 ● **SHS 2022 - SAT Data: 1148** (117 students / 37%)

\*Look at the prospective college/university admissions data.

# The Common App



Common App is a non-profit membership organization representing more than 1,000 diverse institutions of higher education. They connect applicants and those who support them to a wide array of public and private colleges and universities across all 50 U.S. states, and 20 countries.


## Common App Essay Prompts

The **Common App essay** is the student's **primary writing sample** within the Common Application. Prospective colleges/universities that accept the Common App will read this essay to understand your character, background, and value as a potential student.

- **Select Your Prompt Wisely.**
- Review school-specific essays / additional short answer questions (Avoid repeating your existing essay themes, stories, etc., as much as possible). \*Remember, "Optional Questions" are never optional unless you "really don't care about getting accepted to that school.
- Don't re-use an existing essay that "sort of" fits the prompt.
- Words Matter! (650 words max)
- Capture the reader's attention fast (The first two sentences can make or break the review process.)
  - SUMMER ACTIVITY: Pick two (2) prompts and start drafting the essays. Decide which prompt fits "you."
  - Write, Re-write, Edit, and Edit! \*Have multiple people critique / edit your essay.

## SHS PTO -College Essay

**DID YOU KNOW:** Our PTO hires professional college essay editors to help our students. \*Sessions are FREE to students. Join the PTO if you're not already a member, so you can stay up to date on these offerings and LOTS more.



# 2022 First-Year Facts



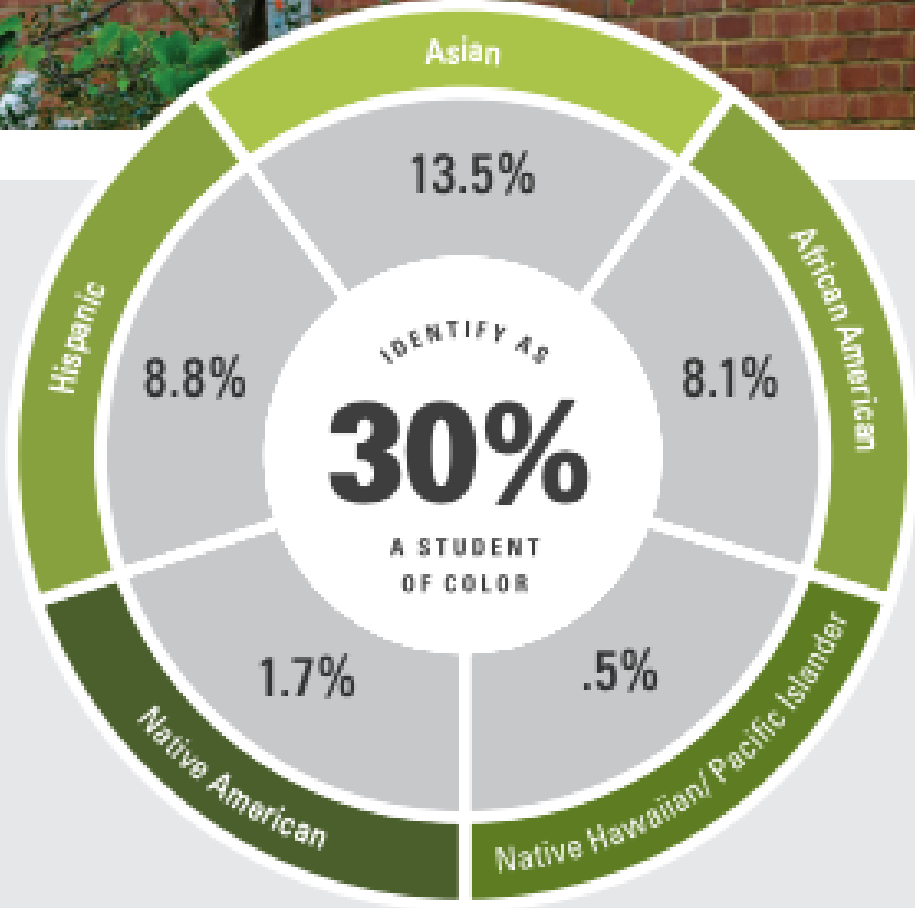
**Enrolled:**  
**5,580**

**Admits:**  
**16,665**  
**(47%)**

**DIVERSITY**

Welcoming the largest class in university history, the number of students of color represents a 23% increase over last year.

These individual percentages add to more than the total as they are inclusive of the growing number of students who identify with more than one race or ethnicity.





**Test Score  
Submission  
Optional Fall  
of 2024**

**Total  
Applicants:  
35,440**

**MIDDLE 50% RANGES**

**WEIGHTED GPA**

**4.19**

**4.47**

3.5

4.0

4.5

**UNWEIGHTED GPA**

**3.77**

**3.97**

3.0

3.5

4.0

**APPLICANTS**

**71%** Applied  
early action

**53%** SAT/ACT scores  
not considered

**Average SAT 1330 / Average ACT 28**

# 2022 First-Year Facts

NORTH CAROLINA  
**82%**  
RESIDENTS

  
98 NC Counties

  
42 States

  
41 Countries

**1,676** High schools  
represented

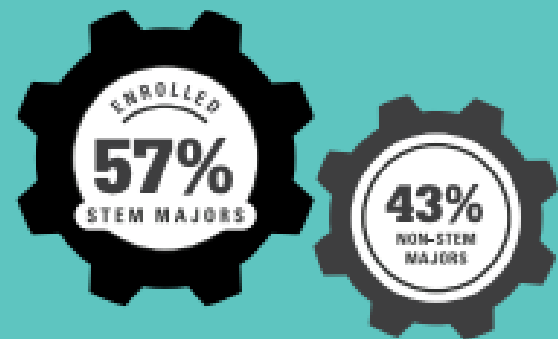
**52%**  
Female

**48%**  
Male

**30%**  
OF NC STUDENTS

FROM RURAL COUNTIES

## ACADEMICS



**66%** Students In  
first-year programs

## TOP 10 MAJORS



## ADMISSIONS

- NCSU has 12 Colleges
- NCSU has 100 Majors / Apply Directly
  - Applicants Apply to 2 Majors

## TIPS

- Demonstrated Interest
- Research & Contact Faculty Directly
- VIP: Essays / Supplemental Questions
- Internal Recommendations



# OUR GREAT COMMUNITY COLLEGE SYSTEM

## Wake Technical Community College

- Wake Tech students who transfer to four-year institutions have a 90.3% success rate.
- 75% of Wake Tech students who transfer to a four-year institution finish in 4 years.
- The average yearly tuition (roughly) at Wake Tech is \$2,600.
- In-state yearly tuition (roughly) for a state-supported school (ECU, UNC, WCU, NC State, etc.) is between \$7,000 - \$10,000.
- **NC Promise Schools:** Resident undergraduate students at Elizabeth City State University, UNC Pembroke, and Western Carolina University pay a tuition rate of \$500 per academic semester.



VIRTUAL  
OPEN  
HOUSE



VIRTUAL  
INFO  
SESSIONS



CAMPUS  
TOURS

EXPLORE: <https://www.waketech.edu/recruiting-and-outreach/visit-wake-tech>



# QUESTIONS

Mitzi Downing

[Mitzi\\_Downing@ncsu.edu](mailto:Mitzi_Downing@ncsu.edu)

